

HIGHLIGHTS

Table 1: Number of Chicago Schools Participating in JData (2014-15)

| | Community Catchment | Participating in JData |
|--------------|---------------------|------------------------|
| Reform | 27 | 24 |
| Conservative | 12 | 10 |
| Other | 12 | 9 |
| Total | 51 | 43 |

Enrollment and Capacity Utilization

- Total enrollment in the 43 reporting schools is 8,570 students.
- 50% are in four peak years (Grades 4-7); 12% are in four high school years (Grades 9-12).
- 50% drop off between 7th and 8th grades.

Table 2: Enrollment by School Denomination (2014-15)

| | Average Size | Total Number | Percent of Total |
|-----------------------|--------------|--------------|------------------|
| Reform (n=24) | 262 | 6,296 | 73% |
| Conservative (n=10) | 150 | 1,495 | 17% |
| Other (n=9) | 87 | 779 | 9% |
| Overall (n=43) | 199 | 8,570 | 99% |

Note: Number in parentheses is the number of responding schools. Numbers do not total 100% due to rounding.

Table 3: Average Capacity Utilization by School Denomination

| | Average |
|-----------------------|------------|
| Reform (n=19) | 79% |
| Conservative (n=10) | 72% |
| Other (n=9) | 61% |
| Overall (n=39) | 72% |

Note: Number in parentheses is the number of responding schools.

- 60% of the schools have combined grades this year. (45 reporting schools)
- Schools lost 475 students from last year. (39 reporting schools)
- The most common destination for attrited students is “nothing.”
- Schools are serving over 400 students with special needs. (43 reporting schools)
- 75% provide in-class support services; 68% provide direct services outside of the classroom.
- 5% charge additional fees for special needs services.

Staff

- Total staff in the 43 reporting schools number 1,242.
- 70% are part-time paid staff; 19% are fulltime paid staff; and 11% are unpaid volunteers.
- 85% are teachers or teacher aides.
- Professional development accounts for 2% of expenses.
- Average professional development budget is \$155 per teacher or \$90 per teaching staff member.

Amy L. Sales, Ph.D., Center for Modern Jewish Studies, Brandeis University
www.jdata.com

Table 4: Support for Professional Development (Custom Tab)

| | Number of responding schools | Number Yes | Percent Yes |
|---------------------------------------------------------------|------------------------------|------------|-------------|
| Offers in-house professional development or learning sessions | 40 | 34 | 85% |
| Pays for outside prof. development or learning opportunities | 40 | 32 | 80% |
| Trains teachers in use of technology | 39 | 23 | 59% |
| Pays teachers for time spent on prof. development or learning | 40 | 23 | 58% |
| Increases salaries to recognize development and learning | 39 | 15 | 38% |
| Pays teachers for planning time | 40 | 12 | 30% |
| Offers incentives for prof. development and learning | 40 | 11 | 28% |

Leadership

- Half of top educational professionals have five or fewer years in their current position.
- Top professionals have, on average, 25 years of relevant experience.

Table 5: Top Educational Professional Weekly Hours Dedicated to School (Custom Tab)

| | Devoted to the School | | Dedicated to Other Work in Synagogue | |
|--------------|-----------------------|-------------|--------------------------------------|-------------|
| | Number | Percent | Number | Percent |
| 0 | | | 8 | 29% |
| 1-19 hours | 6 | 15% | 13 | 46% |
| 20-28 hours | 11 | 28% | 7 | 25% |
| 30-35 hours | 7 | 18% | | |
| 40-45 hours | 10 | 26% | | |
| 50-60 hours | 5 | 13% | | |
| Total | 39 | 100% | 28 | 100% |

- 34 schools have a governing board or volunteer committee. (42 reporting schools)
- 285 volunteers serve on school boards or committees. (32 reporting schools)

Resources

Table 6: Who Has Final Say Over School Budget

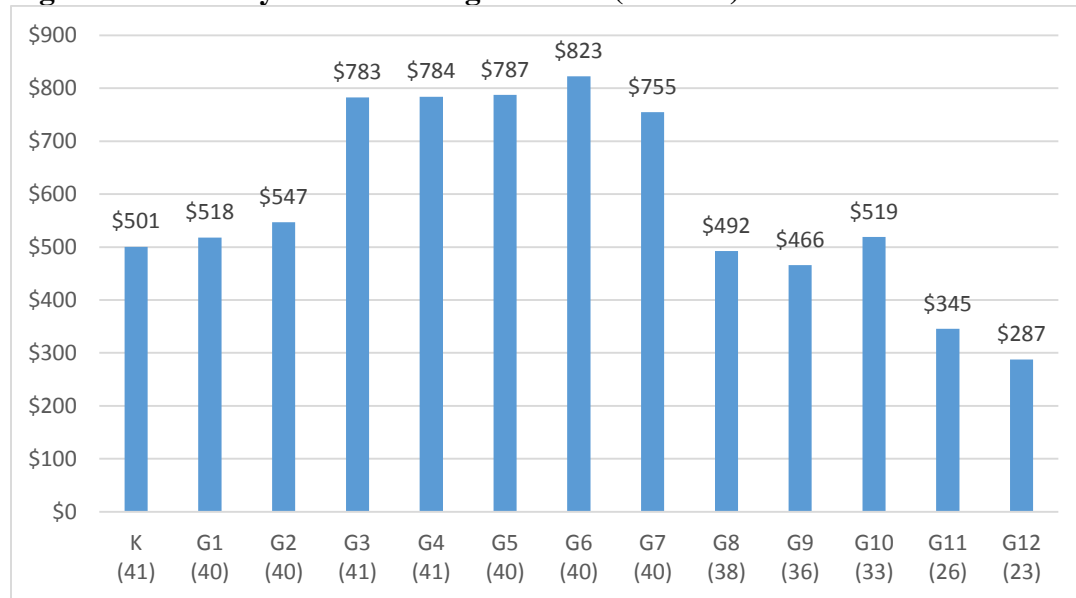
| | Number of schools | Percent of schools |
|-----------------------------------------------|-------------------|--------------------|
| Synagogue board | 17 | 43% |
| Synagogue executive director | 5 | 13% |
| School committee, board, or finance committee | 11 | 28% |
| School director | 7 | 18% |
| Total | 40 | 102% |

Note: Total does not equal 100% due to rounding.

- Total educational expenses in the 37 reporting schools is over \$7.6M.
- Average cost per student is \$993, far greater than the average tuition of \$596.

- Educational expenses include personnel (85%), program (10%), other (7%) and professional development (2%).
- Revenues include tuition (76%), synagogue subsidy (32%), Jewish federation (3%), other unrestricted (3%), earning from endowment (2%).
- 43% of synagogues generate revenue by renting out school space. (42 reporting schools)

Figure 1: Grade-by-Grade Average Tuition (2014-15)



n=41 schools

Table 7: Tuition by Denomination

| | Average |
|-----------------------|--------------|
| Conservative (n=9) | \$703 |
| Reform (n=23) | \$596 |
| Other (n=9) | \$490 |
| Overall (n=41) | \$596 |

Note: Number in parentheses is the number of responding schools.

- On average, schools are providing 92 hours of instruction in 2014.

Table 8: Average Hours Per Year by Denomination (2014-15)

| | Average |
|-----------------------|-----------|
| Conservative (n=9) | 116 |
| Other (n=8) | 93 |
| Reform (n=23) | 82 |
| Overall (n=40) | 92 |

Note: Number in parentheses is the number of responding schools.

Planning

- 21% of schools have a formal strategic plan. (38 reporting schools)